



**THE COPPERBELT UNIVERSITY
SCHOOL OF GRADUATE STUDIES**

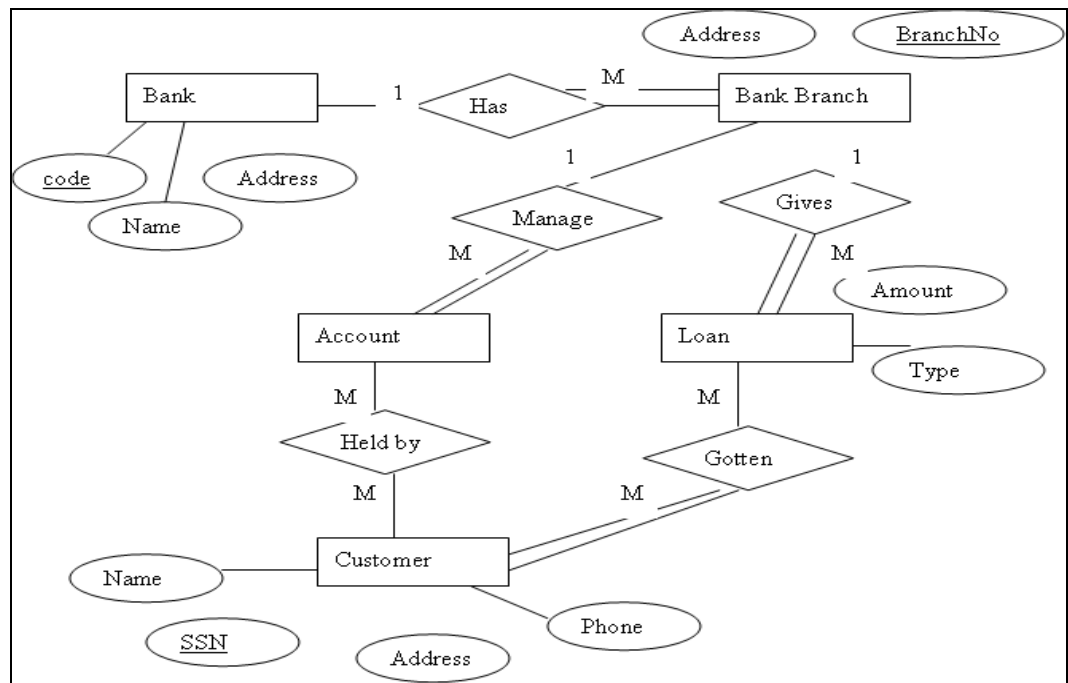
**DECEMBER 2013 – SESSIONAL EXAMINATIONS
MANAGEMENT INFORMATION SYSTEM**

TIME ALLOWED: THREE HOURS

INSTRUCTIONS :

- **Maximum Marks Available – 100**
- **This Paper has SEVEN(7) Questions**
- **Answer Any FIVE(5) Questions**
- **All Questions Carry Equal Marks (20 marks)**

- Q 1 a) Define the following information system terminologies. **[8 marks]**
i) Valuable Information ii) Management Information System
iii) Computer Based Information system iv) System
- b) State and describe 6 components of computer based systems. **[6 marks]**
- c) Focus of a Decision Support System is on decision-making effectiveness regarding structured, unstructured or semi-structured business problems. Discuss this statement highlighting these problems. **[6 marks]**
- Q 2 a) State and discuss 4 challenges associated with implementing Enterprise Systems. **[8 marks]**
- b) Enterprise systems can integrate the key business processes of an entire firm into a single software system that allows information to flow seamlessly throughout the organization. Briefly discuss this state by using appropriate examples. **[6 marks]**
- c) More Efficient Operations and Customer-driven Business Process Enterprise systems can help create the foundation for a customer-driven or demand organization. Discuss briefly this benefit of an enterprise system. **[6 marks]**
- Q 3 a) State and discuss 6 disadvantages of database systems. **[6 marks]**
- b) State and discuss the stages of a database system development lifecycle. **[10 marks]**
- c) State 8 functions of a Database Management System. **[4 marks]**
- Q 4 a) State six (6) properties of relations in databases. **[6 marks]**
- b) State and briefly discuss the three (3) integrity constraints associated with databases. **[6 marks]**
- c) Define the following database terminologies. **[8 marks]**
i) Relational Database Schema ii) Superkey iii) Relation Schema
iv) Multivalued Entity
- Q 5 Consider the ER diagram shown in Figure below for part of a BANK database.
- a) List concisely the user requirements that led to this ER design. **[8 marks]**
- b) Map the ER Diagram to relational schemas. **[12 marks]**



- Q 6 a) Give specific examples of the Uncommitted dependency and inconsistency analysis problems associated with concurrency transaction processing and discuss how they can be overcome using the simple locking protocol. **[8 marks]**.
- b) Briefly discuss at least the four security measures that can be used to safeguard databases from anticipated threats. **[4 marks]**
- c) Briefly discuss the four basic properties of a transaction in as far as databases are concerned. **[8 marks]**.

.....**THE END**.....